



Government Shutdown

What it could mean for the economy and markets

Authored by:

GWIM Chief Investment Office

The House and Senate were unable to reach an agreement on a spending bill on December 21, 2018, leading to a government shutdown that has left the Department of Homeland Security and other federal agencies only partially funded. Historically, most federal shutdowns have been relatively short-lived, lasting between one and five days with limited disruption to government operations. The longest episode lasted for 21 days in late 1995-early 1996, and more recently, the shutdown in October of 2013 persisted for 16 days. Both of these episodes resulted in furloughs for large numbers of federal employees, though neither had a significant market impact.

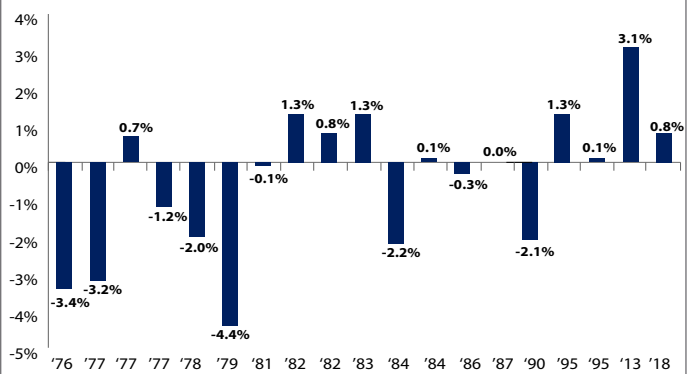
For the fiscal year ending September 30, 2019, most of the government’s spending has already been addressed by Congress. Five appropriations bills have been passed that account for about 75% of government spending. Seven remaining spending bills – accounting for 25% of government spending – have not been settled for the current fiscal year and temporary funding was only in place through December 21. The scope of this current shutdown is limited to a small portion of the government.

Typically, the impact of a government “shut down” on economic growth likewise has also been minimal, as the average length of a funding gap has been less than seven days since 1981. And even when the government does “shutdown”, mandatory programs like Medicare and Social Security are maintained, as are other essential functions, such as air traffic control, law enforcement, and security activities. Likewise, the operations of the Federal Reserve and U.S. Treasury are largely unaffected.

So-called “non-essential” activities—aka, opening national parks, processing passport applications and updating government websites—are halted with only nominal effects, in our view, although certain departments such as the IRS may furlough employees during a shutdown (as the Treasury and the IRS are part of the seven spending bills that have not yet been resolved). While during previous government shutdowns, the IRS generally has not issued refunds, it announced on January 7 that refunds would be issued during the current shutdown.

Tax changes will cause additional complications this year, with more taxpayer questions expected due to the significant change in tax laws and the introduction of new and revised tax forms. Taxpayers will need to wait until January 28, when tax filing season begins, to get those questions answered.

Exhibit 1: S&P 500 Performance During Shutdowns/ Funding Gaps: 1977-2018



Source: Congressional Research Service.
 Past performance is no guarantee of future results.

Are Not FDIC Insured	Are Not Bank Guaranteed	May Lose Value
----------------------	-------------------------	----------------

The bottom line

We are monitoring the potential effect on financial markets.

Equity market performance during shutdowns has historically been positive about half the time and lower the other half of the time, reflecting a minimal median change during shutdowns from 1976-2013. On an average basis, the S&P 500 has dropped only 0.5%, and during the shutdown in 2013, the S&P 500 initially dipped but recovered its losses, closing 3.1% higher at the end of the 16-day funding gap (see Exhibit 1 on first page). Given the high level of event risk with Fed policy and the U.S. China trade negotiations, equity markets are already on edge.

Looking forward – Divided Government

The inability to agree on government funding may foreshadow larger and more frequent political battles, with potentially far broader consequences. The most significant may be the debt ceiling, which is suspended until March 1 (but likely does not need to be resolved until the fall of 2019). Other items that need to be addressed range from renewing a number of expired tax provisions to ACA taxes, to Defense and Non-defense discretionary spending caps under The Bipartisan Budget Act of 2018. On the heels of the midterm elections and with the new Democrat-controlled 116th Congress, the question on many minds: Is this what divided government looks like?

Investing involves risk, including the possible loss of principal. Any investment plan should be subject to periodic review for changes in your individual circumstances, including changes in market conditions and your financial ability to continue purchases.

The opinions expressed are those of the Global Wealth & Investment Management Chief Investment Office (GWIM CIO) only and are subject to change. While some of the information included draws upon research published by BofA Merrill Lynch Global Research, this information is neither reviewed nor approved by BofA Merrill Lynch Global Research. This information and any discussion should not be construed as a personalized and individual recommendation, which should be based on your investment objectives, risk tolerance, and financial situation and needs. This information and any discussion also is not intended as a specific offer by Merrill Lynch, its affiliates, or any related entity to sell or provide, or a specific invitation for a consumer to apply for, any particular retail financial product or service. Investments and opinions are subject to change due to market conditions and the opinions and guidance may not be profitable or realized. Any information presented in connection with BofA Merrill Lynch Global Research is general in nature and is not intended to provide personal investment advice. The information does not take into account the specific investment objectives, financial situation and particular needs of any specific person who may receive it. Investors should understand that statements regarding future prospects may not be realized.

It is not possible to invest directly in an index.

Asset allocation, diversification, dollar cost averaging and rebalancing do not ensure a profit or protect against loss in declining markets. Dollar cost averaging involves continual investment in securities regardless of fluctuating price levels; you should consider your willingness to continue purchasing during periods of high or low price levels.

Investing in fixed-income securities may involve certain risks, including the credit quality of individual issuers, possible prepayments, market or economic developments and yields and share price fluctuations due to changes in interest rates. When interest rates go up, bond prices typically drop, and vice versa. Income from investing in municipal bonds is generally exempt from Federal and state taxes for residents of the issuing state. While the interest income is tax-exempt, any capital gains distributed are taxable to the investor. Income for some investors may be subject to the Federal Alternative Minimum Tax (AMT).

Past performance is no guarantee of future results.

Neither Merrill Lynch nor any of its affiliates or financial advisors provide legal, tax or accounting advice. You should consult your legal and/or tax advisors before making any financial decisions.

The investments discussed have varying degrees of risk. Some of the risks involved with equities include the possibility that the value of the stocks may fluctuate in response to events specific to the companies or markets, as well as economic, political or social events in the U.S. or abroad. Bonds are subject to interest rate, inflation and credit risks. Investments in high-yield bonds may be subject to greater market fluctuations and risk of loss of income and principal than securities in higher rated categories. Investments in foreign securities involve special risks, including foreign currency risk and the possibility of substantial volatility due to adverse political, economic or other developments. These risks are magnified for investments made in emerging markets. Investments in a certain industry or sector may pose additional risk due to lack of diversification and sector concentration. Investments in real estate securities can be subject to fluctuations in the value of the underlying properties, the effect of economic conditions on real estate values, changes in interest rates, and risk related to renting properties, such as rental defaults. There are special risks associated with an investment in commodities, including market price fluctuations, regulatory changes, interest rate changes, credit risk, economic changes and the impact of adverse political or financial factors. Income from investing in municipal bonds is generally exempt from federal and state taxes for residents of the issuing state. While the interest income is tax exempt, any capital gains distributed are taxable to the investor. Income for some investors may be subject to the federal alternative minimum tax (AMT).

Investing directly in Master Limited Partnerships (MLP's), foreign equities, commodities or other investment strategies discussed here, may not be available to, or appropriate for, Merrill Edge clients. However, these investments may exist as part of an underlying investment strategy within exchange-traded funds (ETF's) and mutual funds, which are available to Merrill Edge clients.